

ITEM NO	DESCRIPTION	QUAN
1	H/F SV08-40-O-N-00 4-WAY SOL VALVE	1
2	H/F 6304010 10 VDC SINGLE STUD COIL	1
3	H/F PC08-30-O-N PILOT CHECK VALVE	1
4	7MM PERMANENT PLUG	4
5	O-RING SEAL -019 SIZE, 90 DURO	2
6	M11528-1 VALVE BODY	1
7	H/F 7050000 DRILLED .060 ORIFICE (OPTION)	1

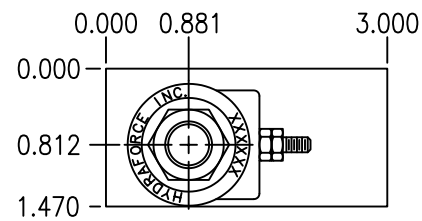
.937/.941 SPOTFACE X .050/.052 DEEP  
FITS -019 0-RING  
2 PLACES

Technical drawing of a mechanical part, likely a bearing housing, showing dimensions and features. The drawing includes a cross-section view of the part, with dimensions in inches. The top surface is a spotface, .937/.941 inches wide and .050/.052 inches deep. The part fits a -019 0-ring in 2 places. The drawing shows two circular features, likely O-rings, with dimensions 1.172 and 3.578. The part has a total width of 4.063 inches and a total height of 4.375 inches. The drawing also shows a cross-section of the part, with dimensions 0.000, 0.273, 0.897, 1.240, and 3.000. A feature is labeled with a circled 5.

0.000 0.273 0.897 1.240 3.000

0.000 0.907 1.172 2.985 3.578 4.063 4.375

5



D